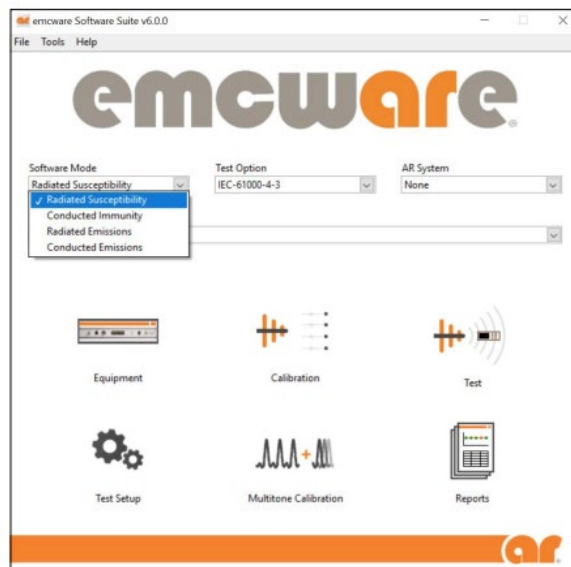


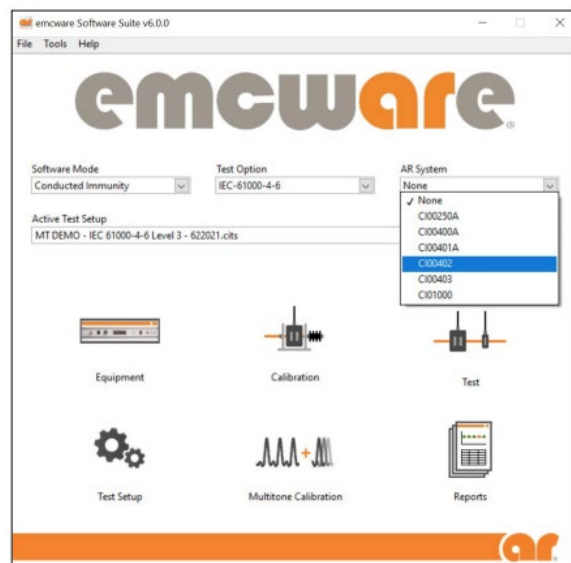
# QUICK START GUIDE – emcware® FOR CI00402

The CI00402 was designed to work with AR's emcware® control interface. Use this Quick Start Guide to configure emcware to your CI00402.

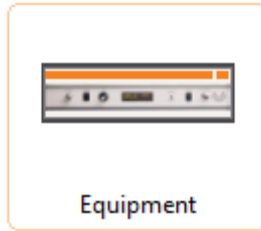
1. Install emcware® and insert USB license key into USB port of your computer. Assure latest version is installed.
2. Connect computer to CI00402 with provided USB 3.0 cable.
3. Reference emcware® user guide.
4. Select **Conducted Immunity**.



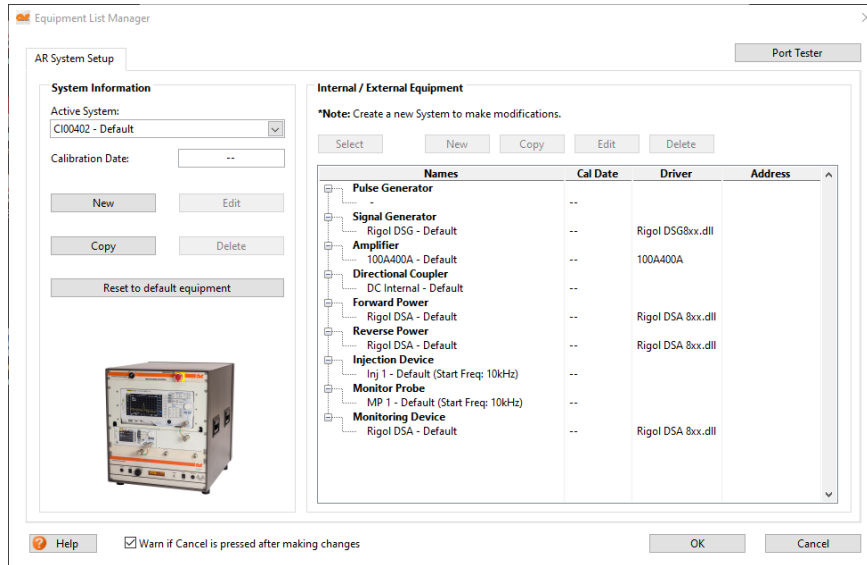
5. Select AR System, CI00402.



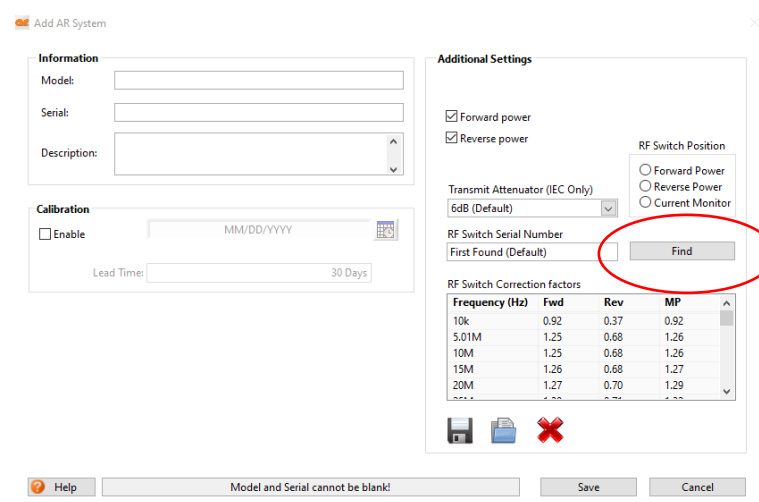
6. Enter Equipment Setup.



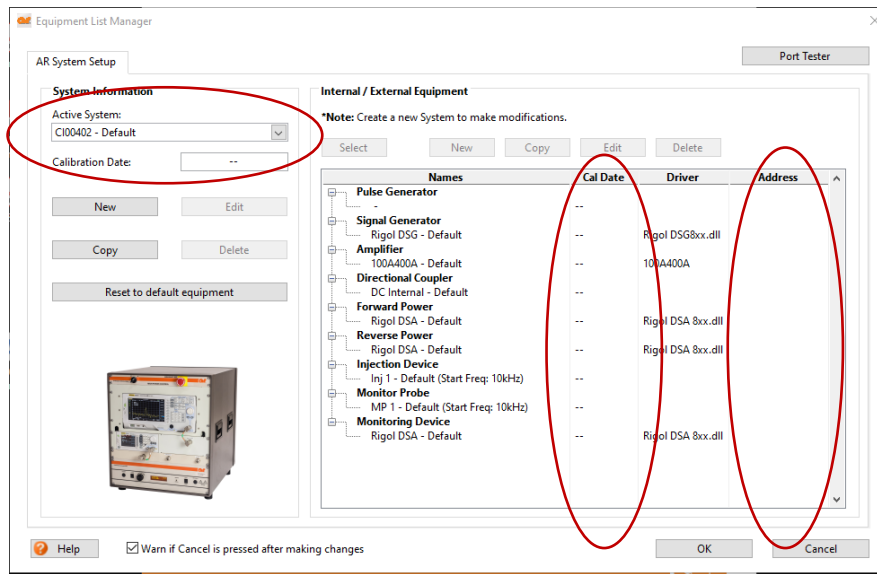
7. The default CI00402 equipment list should be displayed. This configuration loads the expected equipment that is part of the CI00402 system.



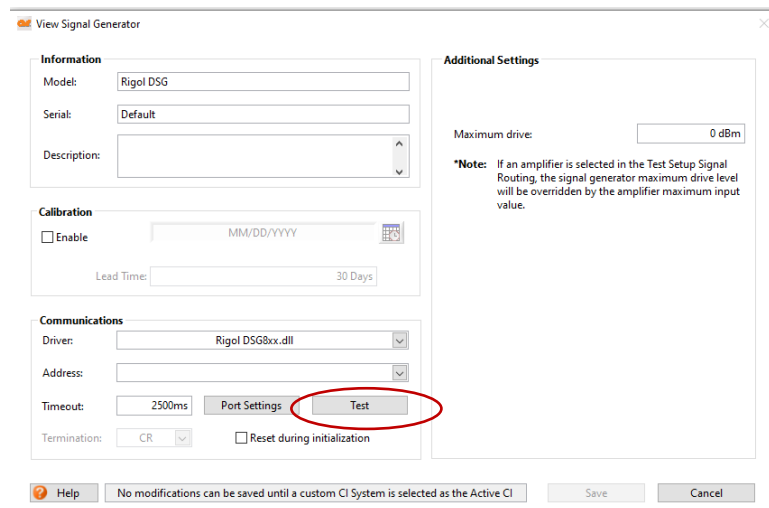
8. Under System Information, click **New**. This window allows the user to enter specific details for the subject CI00402 system. Enter unique identifier, (**CI00402 xxxx**). Calibration dates may be entered as required. Click **Find**. This will assign internal RF switch to the active system being created. Click **Save**.



9. The system you created should now show up under Active System. If connected to CI system, addresses should be displayed. You can click each to assign serial numbers and calibration dates if desired. Select Monitoring probe and enter calibrated offsets, (Note: attenuators used are presumed to be 6, 10 and 20dB).



10. The system should now be configured. Double clicking any remote-controlled equipment will give the option to test remote operation.



11. Refer to EMCWARE user guide for further detail on functional operation.